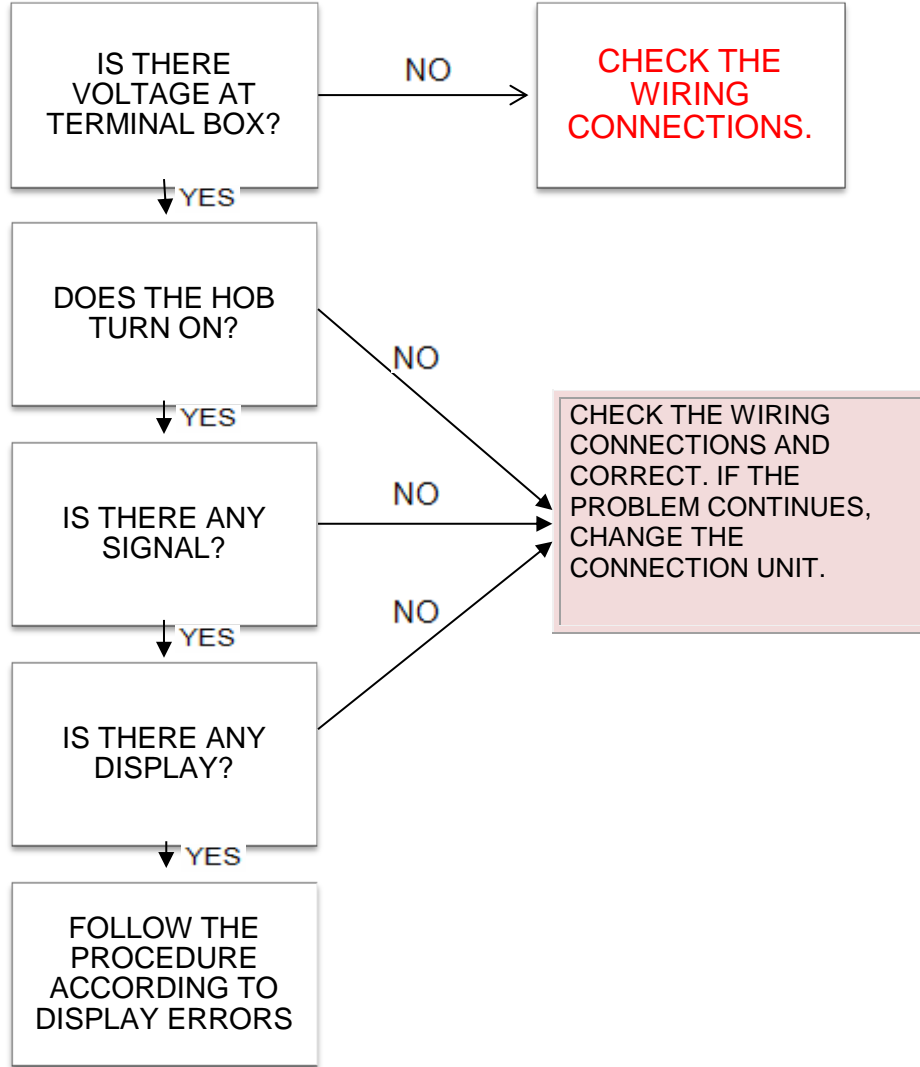
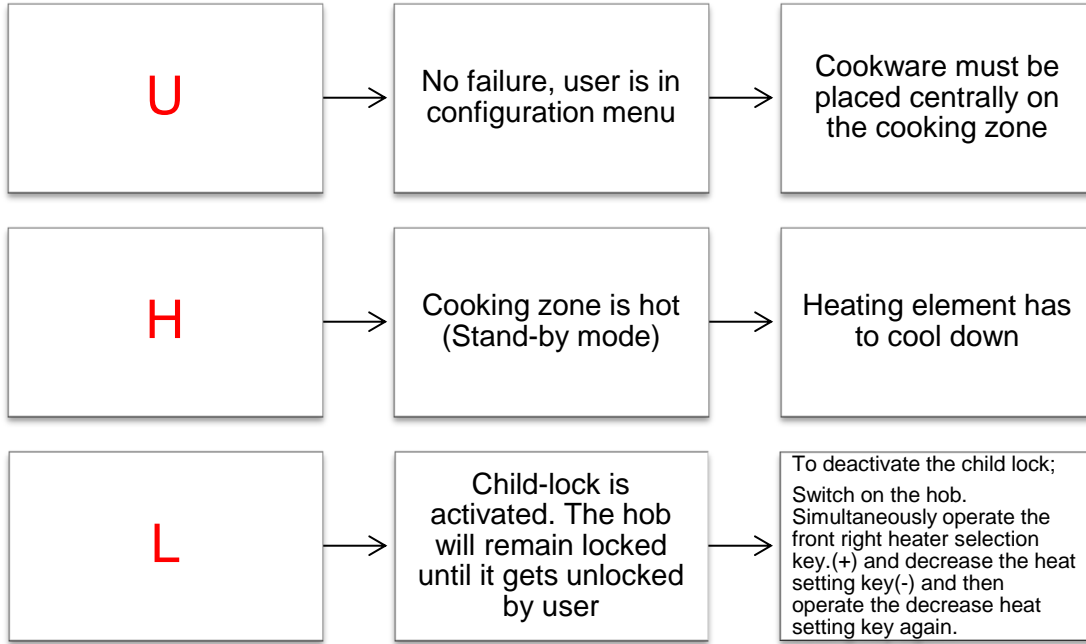


Induction Hob Not Working:



FILE	ISSUE DATE	PREPARED BY	CONTROLLED BY	APPROVED BY
\\manfile\PISIRICICHAZLARFAB\Ur un Audit\MÜŞTERİ DESTEK\SERVİS KILAVUZU\SERVİS BİLGİ FORMLARI	13.07.2015	CUSTOMER SUPPORT		

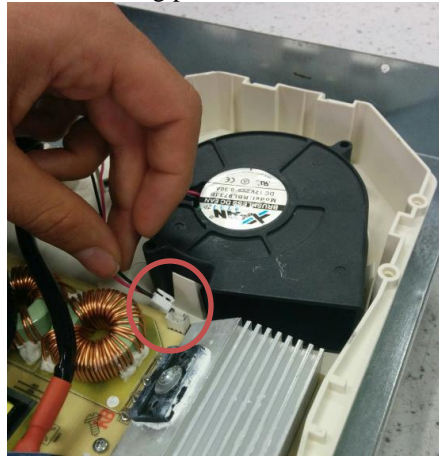
COOKERS
INDUCTION HOB DISPLAY ERRORS



Induction Hob Display Errors:

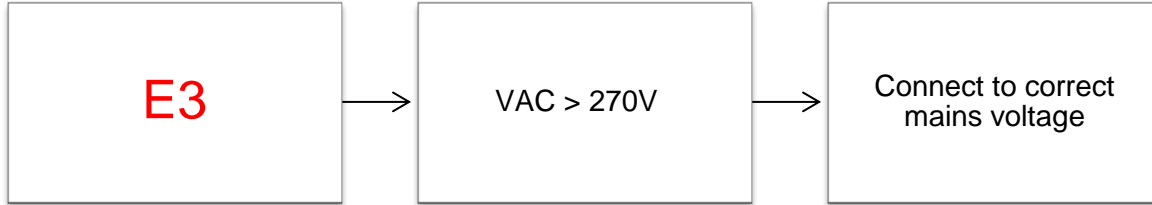


For solving problem, reconnect the cable on below picture.
While reassembling please refer to circuit diagrams

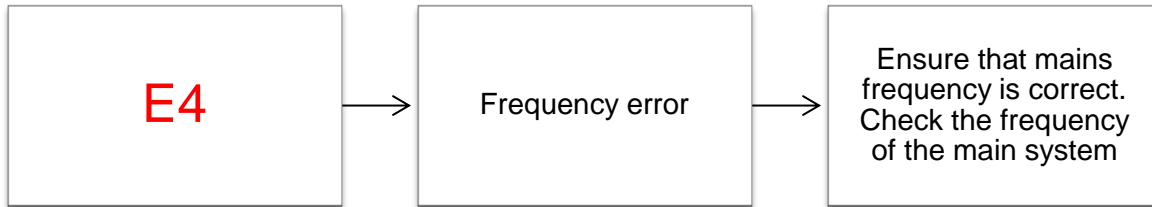


FILE	ISSUE DATE	PREPARED BY	CONTROLLED BY	APPROVED BY
\\manfile\PISIRICICHAZLARFAB\Ur un Audit\MÜŞTERİ DESTEK\SERVİS KILAVUZU\SERVİS BİLGİ FORMLARI	13.07.2015	CUSTOMER SUPPORT		

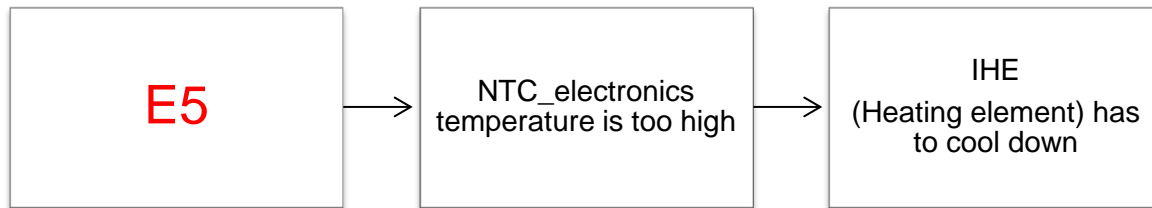
**COOKERS
INDUCTION HOB DISPLAY ERRORS**



That could be fixed by turn off hob. If problem continue ,please check electric distribution network.



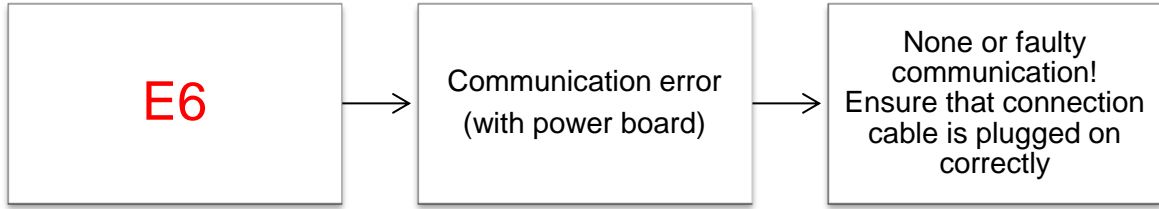
E4 error is shown when hob frequency is different from mains frequency. You could check inductors to know 50 Hz or 60 Hz. If there isnt any difference between mains and hob, turn off it and start again.



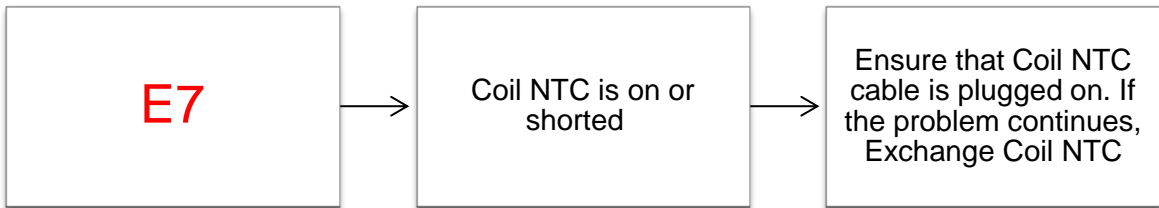
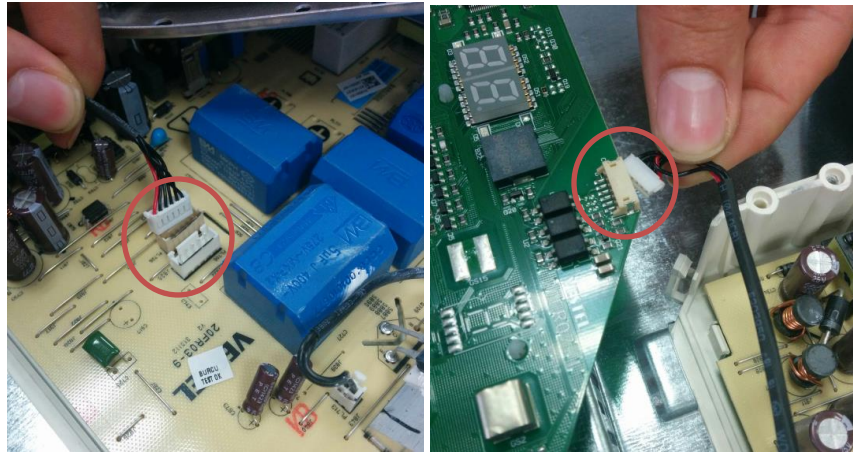
NTC is warmed too high, turn off the hob and wait for cooling. If NTC is warming on seconds, it is a fabrication error and change the inductor which is broken one.

FILE	ISSUE DATE	PREPARED BY	CONTROLLED BY	APPROVED BY
\\manfile\PISIRICICHAZLARFAB\Ur un Audit\MÜŞTERİ DESTEK\SERVİS KILAVUZU\SERVİS BİLGİ FORMLARI	13.07.2015	CUSTOMER SUPPORT		

COOKERS
INDUCTION HOB DISPLAY ERRORS



This error is about connection between NTC and control panel. Check below cables. If there any shortcircuit, change the inductor.



E7 error is showed when coil temperature could not be measured. Check the cable and plug in.

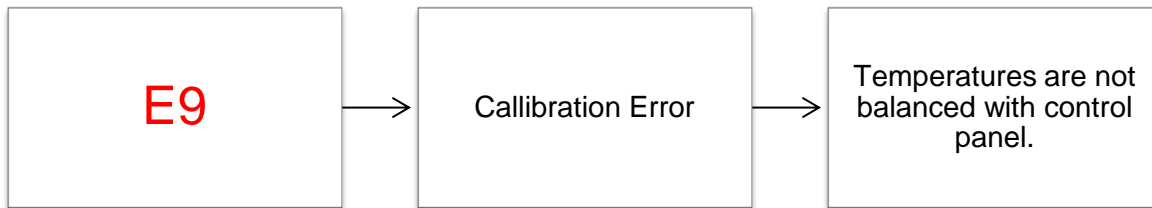
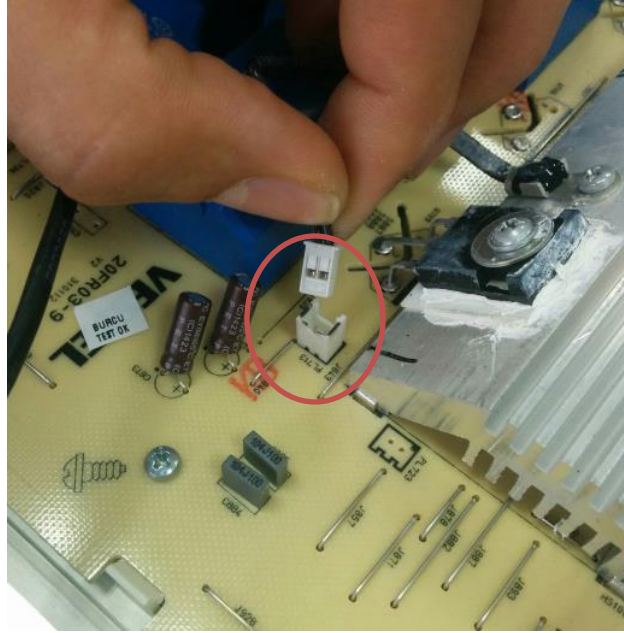


FILE	ISSUE DATE	PREPARED BY	CONTROLLED BY	APPROVED BY
\\manfile\PISIRICICHAZLARFAB\Ur un Audit\MÜŞTERİ DESTEK\SERVİS KILAVUZU\SERVİS BİLGİ FORMLARI	13.07.2015	CUSTOMER SUPPORT		

**COOKERS
INDUCTION HOB DISPLAY ERRORS**



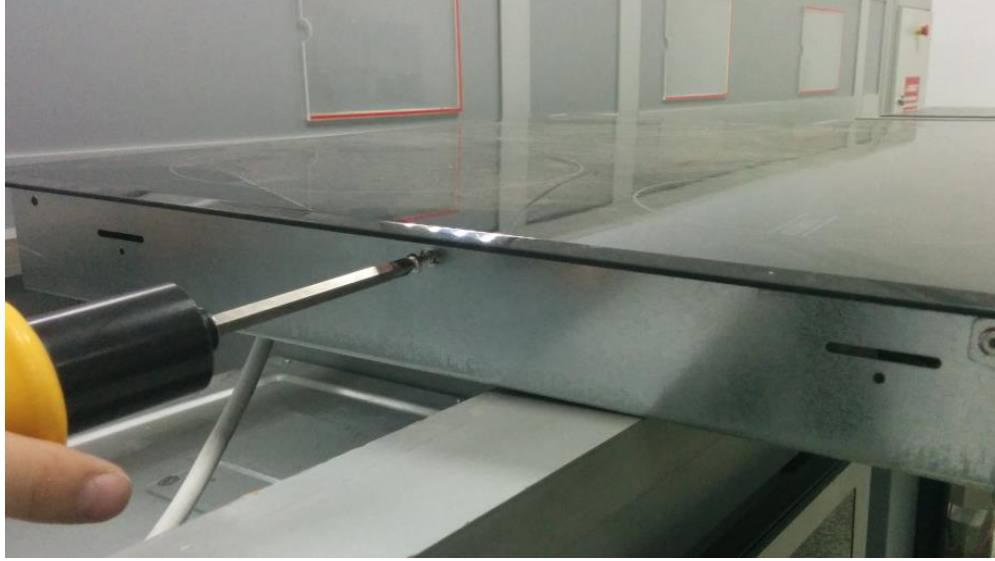
This error is about cooling sensor. Check the cable and plug in.



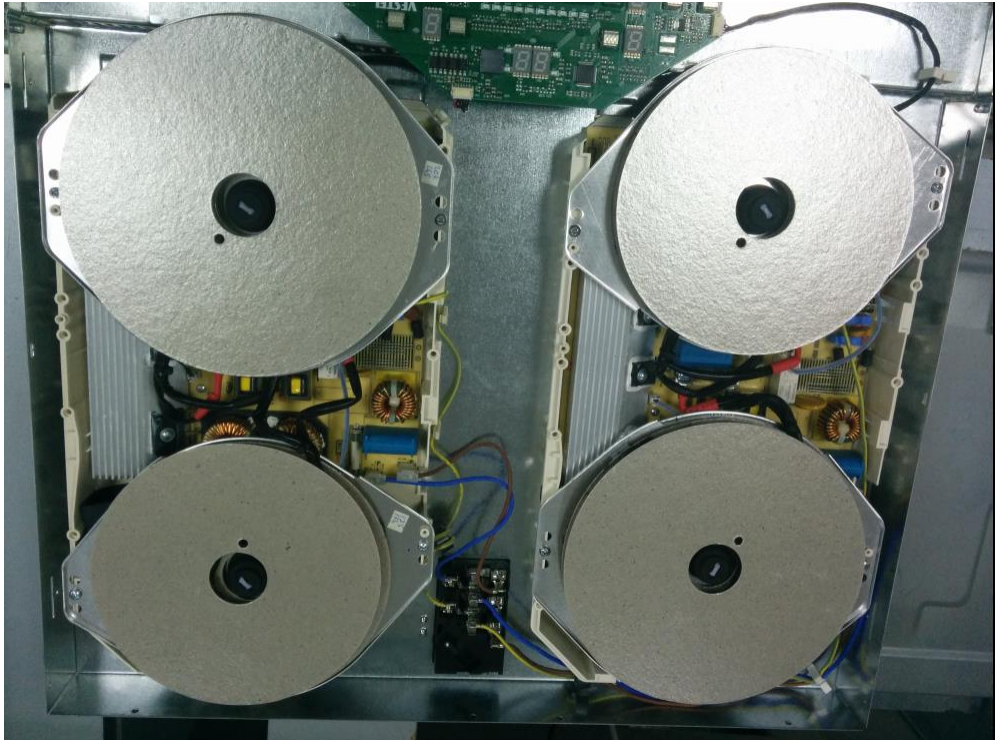
FILE	ISSUE DATE	PREPARED BY	CONTROLLED BY	APPROVED BY
\\manfile\PISIRICICHAZLARFAB\Ur un Audit\MÜŞTERİ DESTEK\SERVİS KILAVUZU\SERVİS BİLGİ FORMLARI	13.07.2015	CUSTOMER SUPPORT		

Disassamble The Induction Hob

Unscrew all surrounding screws of hob :



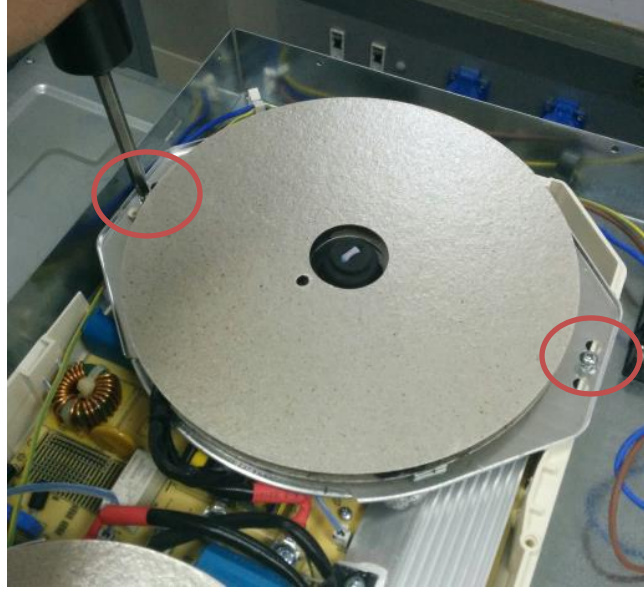
Inside of Induction HOB



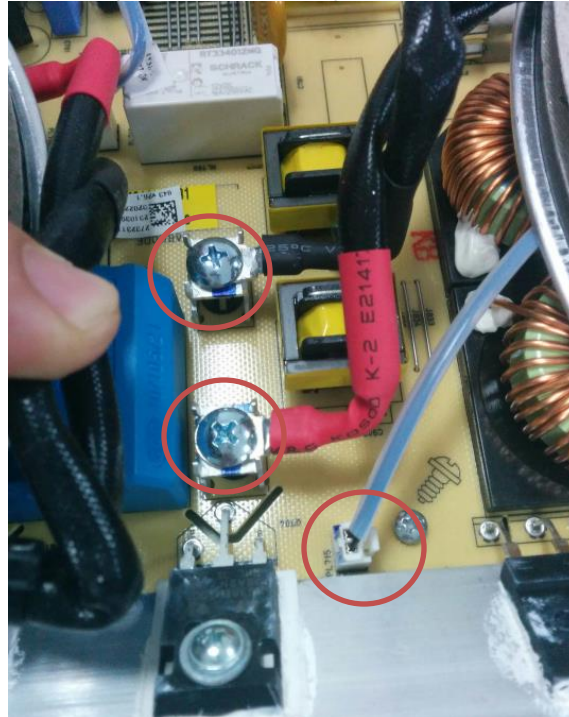
FILE	ISSUE DATE	PREPARED BY	CONTROLLED BY	APPROVED BY
\\manfile\PISIRICICHAZLARFAB\Ur un Audit\MÜŞTERİ DESTEK\SERVİS KILAVUZU\SERVİS BİLGİ FORMLARI	13.07.2015	CUSTOMER SUPPORT		

Changing Heating Element (IHE) & Touch Control Unit

Unscrew holder screws of IHE :



Pull off terminal connections on the heating element (IHE)
Remove heating element and change with another if necessary



FILE	ISSUE DATE	PREPARED BY	CONTROLLED BY	APPROVED BY
\\manfile\PISIRICICHAZLARFAB\Ur un Audit\MÜŞTERİ DESTEK\SERVİS KILAVUZU\SERVİS BİLGİ FORMLARI	13.07.2015	CUSTOMER SUPPORT		

**COOKERS
INDUCTION HOB DISPLAY ERRORS**

To change the touch control unit ; remove connected wirings



Terminal Connection

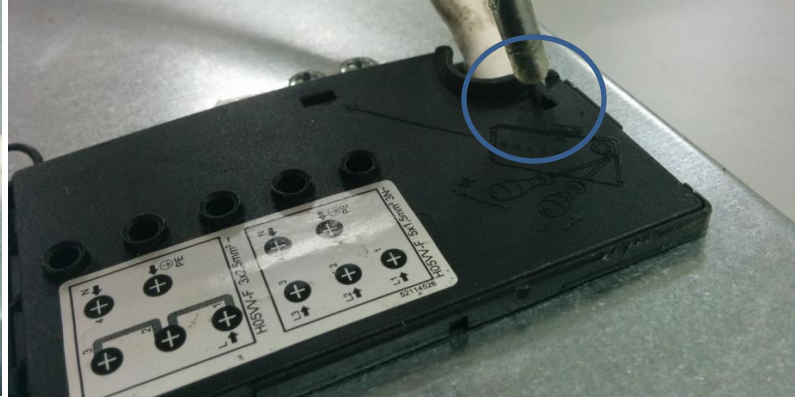
There is a circuit diagram on terminal box. It could be changed by mains or customer offer.



FILE	ISSUE DATE	PREPARED BY	CONTROLLED BY	APPROVED BY
\\manfile\PISIRICICHAZLARFAB\Ur un Audit\MÜŞTERİ DESTEK\SERVİS KILAVUZU\SERVİS BİLGİ FORMLARI	13.07.2015	CUSTOMER SUPPORT		

COOKERS
INDUCTION HOB DISPLAY ERRORS

Press on the hooks of connection unit for opening terminal box.



Check wiring or change according to sticker on terminal box



P.S. While reassembling please refer to circuit diagrams

FILE	ISSUE DATE	PREPARED BY	CONTROLLED BY	APPROVED BY
\\manfile\PISIRICICHAZLARFAB\Ur un Audit\MÜŞTERİ DESTEK\SERVİS KILAVUZU\SERVİS BİLGİ FORMLARI	13.07.2015	CUSTOMER SUPPORT		